

Certificate of Analysis



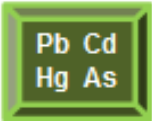
Client: TREADWELL FARMS
Client Sample ID: TF-EB
Product Type: Tincture
Client Lot#: TIN1-EVE1_2020_002
Production Date: NA
Production Size: NA
Date Received: 9/21/2020
Lab Sample ID: F009013-1
Report Date: 10/2/2020



Pesticides



Passed



Heavy Metals



Passed



Microbials



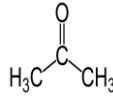
Passed



Mycotoxin



Passed



Res. Solvents



Passed



Moisture

Not Tested



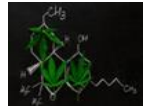
Water

Not Tested



Content Foreign Matter

Not Tested



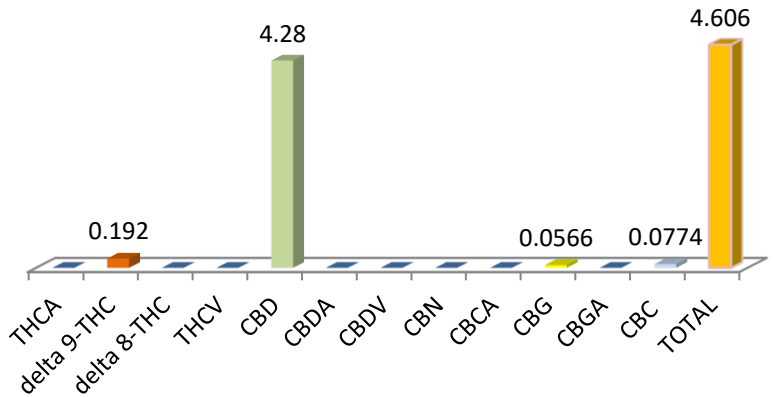
Terpenes

Tested

Analysis Information

Test Method: ACCULAB SOP 15 Batch: B200940

Analyte	CAS#	Results	Units	LOQ
THCA	23978-85-0	ND	%	0.0370
delta 9-THC	1972-08-3	0.192	%	0.0370
delta 8-THC	5957-75-5	ND	%	0.0370
THCV	31262-37-0	ND	%	0.0370
CBD	13956-29-1	4.28	%	0.0370
CBDA	1244-58-2	ND	%	0.0370
CBDV	24274-48-4	ND	%	0.0370
CBN	521-35-7	ND	%	0.0370
CBCA	185505-15-1	ND	%	0.0370
CBG	25654-31-3	0.0566	%	0.0370
CBGA	25555-57-1	ND	%	0.0370
CBC	20675-51-8	0.0774	%	0.0370



Total THC	Total CBD	Total Cannabinoids
0.199%	4.28%	4.606%
THC/Unit:	CBD/Unit:	Total Cannabinoids/Unit:
55.3 mg	1232 mg	1326.5 mg



40 S Dewey St. Eustis, FL 32726 Tel: (352) 308-8020



Accreditation# 109150



Certificate of Analysis



Analysis Information

Test Method: ACCULAB SOP 17

Analyte	CAS#	Results	Units	LOQ
alpha-Bisabolol	23069-26-1	ND	mg/g	0.07843
(+)-Borneol	464-43-7	ND	mg/g	0.07843
(-)-Isopulegol	89-79-2	ND	mg/g	0.07843
Camphene	79-92-5	ND	mg/g	0.07843
Camphor	76-22-2	ND	mg/g	0.07843
Delta-3-carene	498-15-7	ND	mg/g	0.07843
beta-Caryophyllene	87-44-5	ND	mg/g	0.07843
Caryophyllene Oxide	1139-30-6	ND	mg/g	0.07843
alpha-Cedrene	469-61-4	ND	mg/g	0.07843
Cedrol	77-53-2	ND	mg/g	0.07843
p-Isopropyltoluene	99-87-6	ND	mg/g	0.07843
Endo-fenchyl alcohol	2217-02-9	ND	mg/g	0.07843
Eucalyptol	470-82-6	ND	mg/g	0.07843
Famesene	502-61-4	0.0251	mg/g	0.07843
Fenchone	4695-62-9	ND	mg/g	0.07843
Geraniol	106-24-1	ND	mg/g	0.07843
Geranyl acetate	105-87-3	ND	mg/g	0.07843
Guaiol	489-86-1	ND	mg/g	0.07843
Hexahydrothymol	89-78-1	ND	mg/g	0.07843
alpha-Humulene	6753-98-6	ND	mg/g	0.07843
Isoborneol	124-76-5	ND	mg/g	0.07843
Isopulegol	89-79-2	ND	mg/g	0.07843
d-Limonene	5989-27-5	ND	mg/g	0.07843

Batch: B200924

Analyte	CAS#	Results	Units	LOQ
Linalool	78-70-6	ND	mg/g	0.07843
p-Mentha-1,5-diene	99-83-2	ND	mg/g	0.07843
beta-Myrcene	123-35-3	ND	mg/g	0.07843
Nerolidol	7212-44-4	ND	mg/g	0.07843
Trans-Nerolidol	40716-66-3	ND	mg/g	0.07843
Ocimene	13877-91-3	ND	mg/g	0.07843
alpha-Pinene	80-56-8	ND	mg/g	0.07843
beta-Pinene	18172-67-3	ND	mg/g	0.07843
Pulegone	89-82-7	ND	mg/g	0.07843
Sabinene	3387-41-5	ND	mg/g	0.07843
Sabinene hydrate	546-79-2	ND	mg/g	0.07843
gamma-Terpinene	99-85-4	ND	mg/g	0.07843
alpha-Terpinene	99-86-5	ND	mg/g	0.07843
Terpineol	8000-41-7	ND	mg/g	0.07843
Terpinolene	586-62-9	ND	mg/g	0.07843
Valencene	4630-07-3	ND	mg/g	0.07843
Nerol	106-25-2	ND	mg/g	0.07843
cis-Nerolidol	3790-78-1	ND	mg/g	0.07843
Borneol	507-70-0	ND	mg/g	0.07843
B-Terpineol	138-87-4	ND	mg/g	0.07843
A-Terpineol	98-55-5	ND	mg/g	0.07843
Ocimene isomer II	13877-91-3	ND	mg/g	0.07843
Ocimene isomer I	13877-91-3	ND	mg/g	0.07843

This report shall not be reproduced, unless in its entirety, without written approval from AccuScience Laboratories. This "Certification of Analysis" was produced under appropriate laboratory conditions using the methods developed and approved under ISO 17025.

Homogeneity: This product is determined to be homogeneous following in-house procedures developed in accordance with the requirements of ISO 17025. **Measurement and support equipment:** All instruments and support equipment such as volumetric glassware, balances are calibrated and verified and all records are maintained.

LOQ= Limit of Quantitation, ND= Non-Detect, ppm= Parts per Million, ppb=Parts Per Billion, mg/PK= Milligram per Package, NA=Not Applicable

CAS#: Chemical Abstract Service, Registry Number, %= Percent

Names and Signature of Certifying Officer

Dr. Harry Behzadi, pHD

President, CEO

